

\$122,000

Warming temperatures will bring the stands of Aspen to full foliage on 35 acres with views of the areas red rock formations top off the perfect spot to enjoy your weekends. Shed/cabin perfect for your shelter needs and don't overlook the barbeque area.



Features

Sand Creek Park

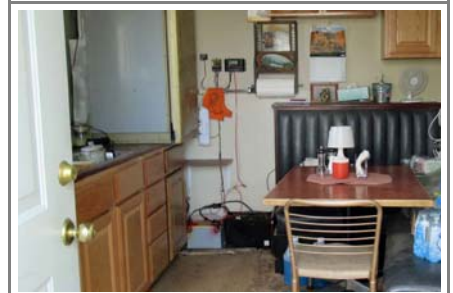
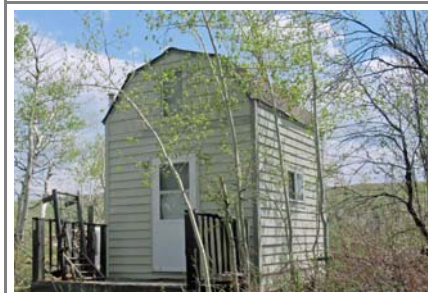
Parcel 11 Section 26

- Aspens have hidden treasures
- Grassy meadows
- Shed/cabin turn-key ready
- Sand Creek fishing nearby
- Summertime recreation
- Area known for wildlife



Specifics

Acres ±	35
Association Dues (yr)	\$ 105
Property Taxes	\$ 2,527
Location	
1 ½ hrs NW of Fort Collins CO	
30 minutes South of Laramie WY	
MLS No	992574



Information obtained from reliable sources and believed to be accurate



Cabin Country

970-482-5263

PO Box 1967 Fort Collins CO 80522-1967

Bill McClelland bill@cabin-country.com

Come explore Northern Colorado's mountains