

\$122,000

In the summer when the days are hot, find a shady spot among the Aspens and hardly move a single bit! 35 acres with views of the areas red rock formations top off the perfect spot to enjoy your weekends. Shed/cabin perfect for your shelter needs and don't overlook the barbeque area. Don't overlook the 360 degree views which includes the area's red rock cliff formations.



Features

- Aspens have hidden treasures
- Grassy meadows
- Shed/cabin turn-key ready
- Sand Creek fishing nearby
 - 8 miles of Sand Creek
 - Access to numerous beaver ponds
- Summertime recreation
- Area known for wildlife
 - Located in Game Unit 8

Sand Creek Park

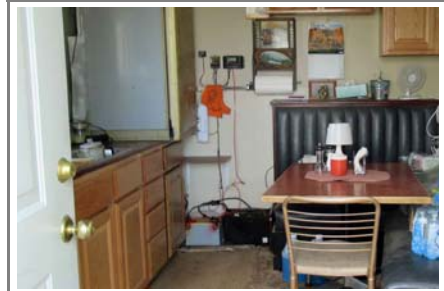
Parcel 11 Section 26



Specifics

Acres ±	35
Association Dues (yr)	\$ 105
Property Taxes	\$ 4,260
Location	
1 ½ hrs NW of Fort Collins CO	
30 minutes South of Laramie WY	
MLS No	992574

Information obtained from reliable sources and believed to be accurate



Cabin Country

970-482-5263

PO Box 1967 Fort Collins CO 80522-1967

Bill McClelland bill@cabin-country.com

Come explore Northern Colorado's mountains